

Previous
Screen

Specialty
Fasteners

Tooling
Options

Table of
Contents

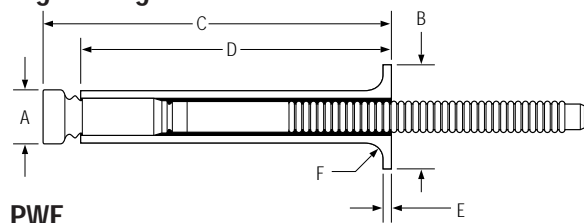
FloorTight® Specialty Fastener

FloorTight® Specialty Fastener

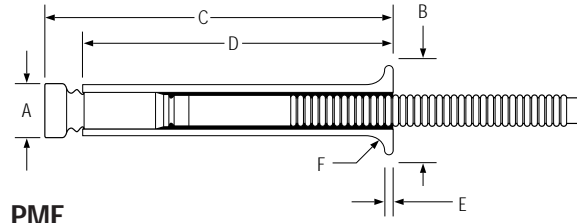
Designed for large vehicle flooring installations, FloorTight® fasteners eliminate the counterboring process in plywood and dimpling in plymetal. Because FloorTight® fasteners are locked on the blind side, they are also ideal for other plywood or plymetal applications.



Engineering Standards



PWF

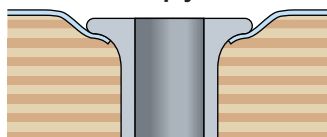


PMF

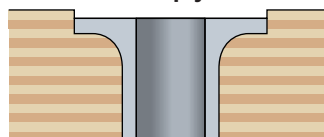
Fastener Dimensions

Part No.	Grip range	A max	B nom	C max	D nom	E nom	F radius	Clamp
PMF-R10-20	.750 - 1.375	.325	.560	2.125	1.750	.050	.125	Standard
PMF-R10-26	.750 - 1.625	.325	.560	2.500	2.125	.050	.125	Standard
PWF-R10-20	.750 - 1.375	.325	.675	2.125	1.750	.050	.125	Standard
PWF-R10-26	.750 - 1.625	.325	.675	2.500	2.125	.050	.125	Standard
PWFMC-R10-20	.750 - 1.375	.325	.675	2.125	1.750	.050	.125	Medium
PWFWLC-R10-20	.750 - 1.375	.325	.850	2.125	1.750	.050	.125	Low Clamp Wide Flange

Installation in plymetal – PMF



Installation in plywood – PWF



Typical Installed Values in Nominal Grip*

Shear	Tensile	Pin Retention
4300	3000	500

*With pin in shear plane

Hole Preparation Data

Minimum	Maximum	Recommended
.328	.339	.332 (Q drill)

Material, Finish and Lubrication

	Material	Finish	Lubrication
Sleeve	Steel	Zinc electroplate with gold chromate	Dry film
Pin	Steel	Black	Wax film

NOTE: Stringer material must withstand force of fastener installation without pulling through (approx. 1/8" thick). Testing is performed in AB Grade - 7 ply - plywood. Fastener performance may vary depending on grade of plywood.



Previous
Screen

Specialty
Fasteners

Tooling
Options

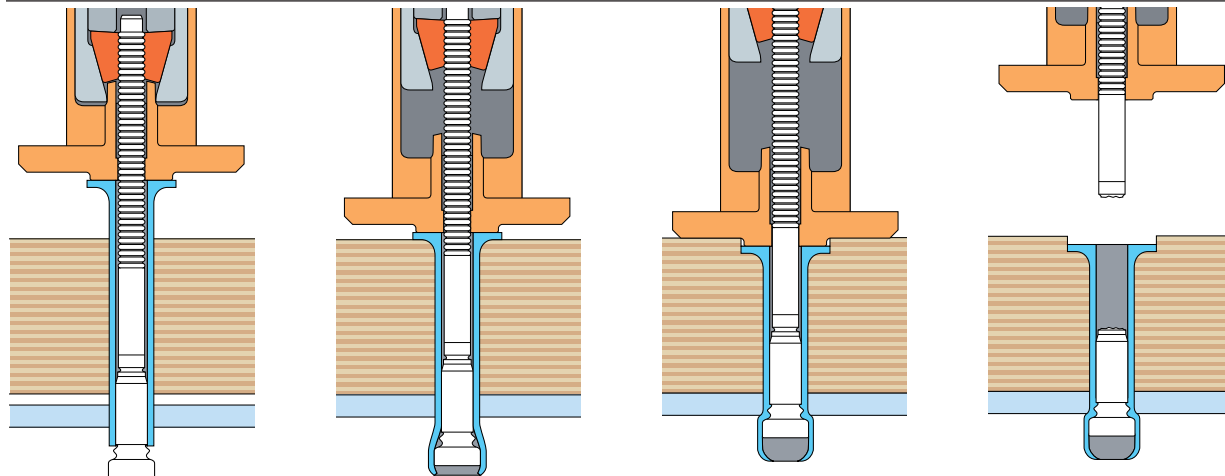
Table of
Contents

FloorTight® Specialty Fastener

Installation Tooling

Installation Tool	Nose Assembly	Type	Use
245	99-3452	Pneudraulic	Production
246	99-3452	Pneudraulic	Production
2580	99-3452	Hydraulic	Prod. or Maint. & Repair

Installation Sequence



[Click Here to view animation of installation sequence](#)

Part Number Identification

PWF - R - 10 - 20

